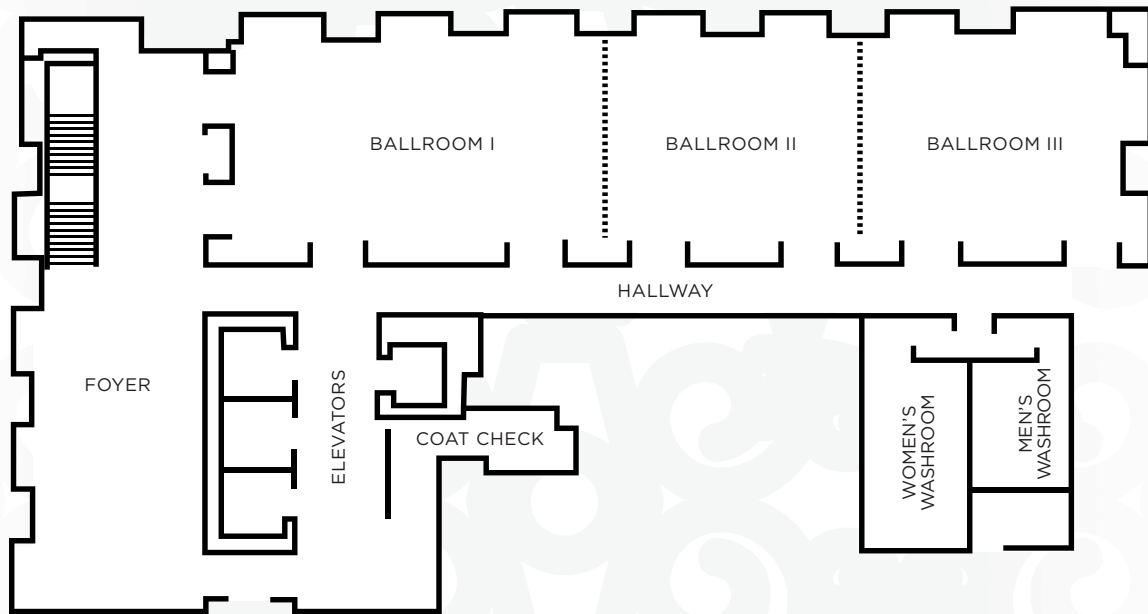


THE ADELAIDE HOTEL TORONTO

GRAND BALLROOM

An exceptional culinary experience transcends the traditional with opulent modern decor and a north view from the 10th floor of The Adelaide Hotel Toronto.

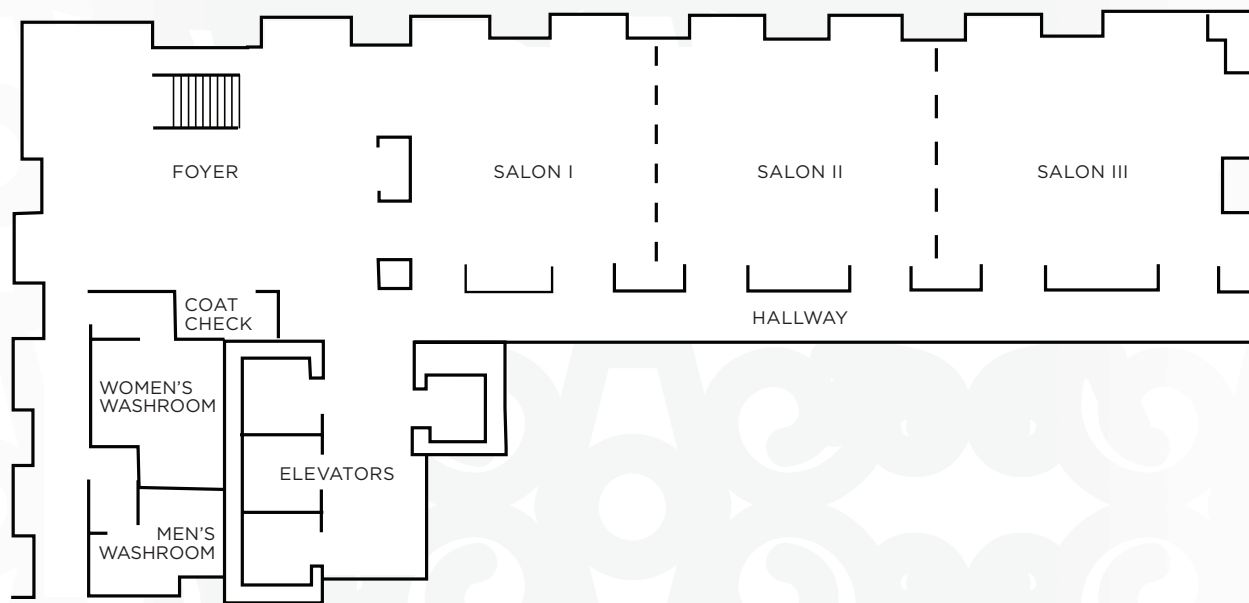


GRAND BALLROOM	DIMENSIONS (L X W)	AREA (SQ. FT.)	BANQUET	CRESCENT ROUNDS	CLASSROOM	HOLLOW SQUARE	BOARDROOM	U-SHAPE	THEATRE	RECEPTION	DINNER DANCE
BALLROOM I, II & III	117' X 32'	3,744	220	108	170	-	-	-	260	320	200
BALLROOM I & II	80' X 32'	2,560	140	72	140	62	72	58	180	210	100
BALLROOM II & III	69' X 32'	2,208	120	60	100	54	44	62	160	180	80
BALLROOM I	48' X 32'	1,536	80	36	70	35	36	39	100	130	-
BALLROOM II	32' X 32'	1,024	60	24	50	27	22	31	80	90	-
BALLROOM III	37' X 32'	1,184	60	24	50	27	22	31	80	90	-
FOYER	71' X 24'	1,704	60	24	-	-	-	-	-	-	-

THE ADELAIDE HOTEL TORONTO

GRAND SALON

A grand staircase and soaring ceilings compliment the ornate detail of this north-facing 9th floor event space at The Adelaide Hotel Toronto.



GRAND SALON	DIMENSIONS (L X W)	AREA (SQ. FT.)	BANQUET	CRESCENT ROUNDS	CLASSROOM	HOLLOW SQUARE	BOARDROOM	U-SHAPE	THEATRE	RECEPTION	DINNER DANCE
SALON I, II & III	99' X 32'	3,168	180	84	140	-	-	-	230	240	160
SALON I & II	62' X 32'	1,984	100	48	90	47	44	51	150	170	60
SALON II & III	69' X 32'	2,208	120	60	100	54	44	62	160	180	80
SALON I	30' X 32'	960	40	18	40	25	20	20	70	80	-
SALON II	32' X 32'	1,024	60	24	50	27	22	31	80	90	-
SALON III	37' X 32'	1,184	60	24	50	27	22	31	80	90	-
FOYER	46' X 32'	1,472	-	-	-	-	-	-	-	-	-

THE ADELAIDE HOTEL TORONTO

THE EXCHANGE FLOOR BAY STREET

Dynamic luxury meeting suites soaring 30 storeys over downtown Toronto.

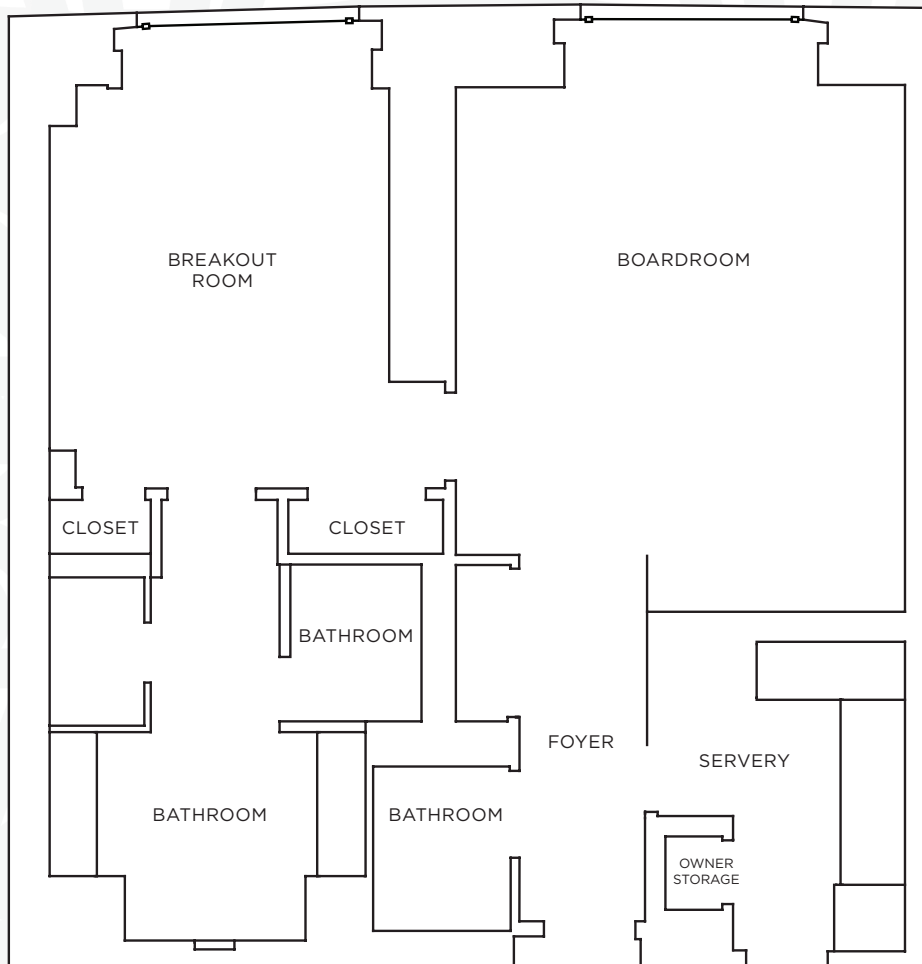


BAY STREET	DIMENSIONS (L X W)	AREA (SQ. FT.)	ROUNDS	HALF ROUNDS	CLASSROOM HORIZONTAL	HOLLOW SQUARE	BOARDROOM	RECEPTION	U-SHAPE	THEATRE
TOTAL	-	1,847	65	42	30	-	-	65	32	10
LOUNGE	28' X 19'	532	-	-	-	-	-	-	-	-
MEDIA ROOM	25' X 27'	675	40	24	30	26	26	-	-	50
DINING ROOM	32' X 20'	640	40	24	30	26	26	-	-	40

THE ADELAIDE HOTEL TORONTO

THE EXCHANGE FLOOR BANK STREET

Dynamic luxury meeting suites soaring 30 storeys over downtown Toronto.

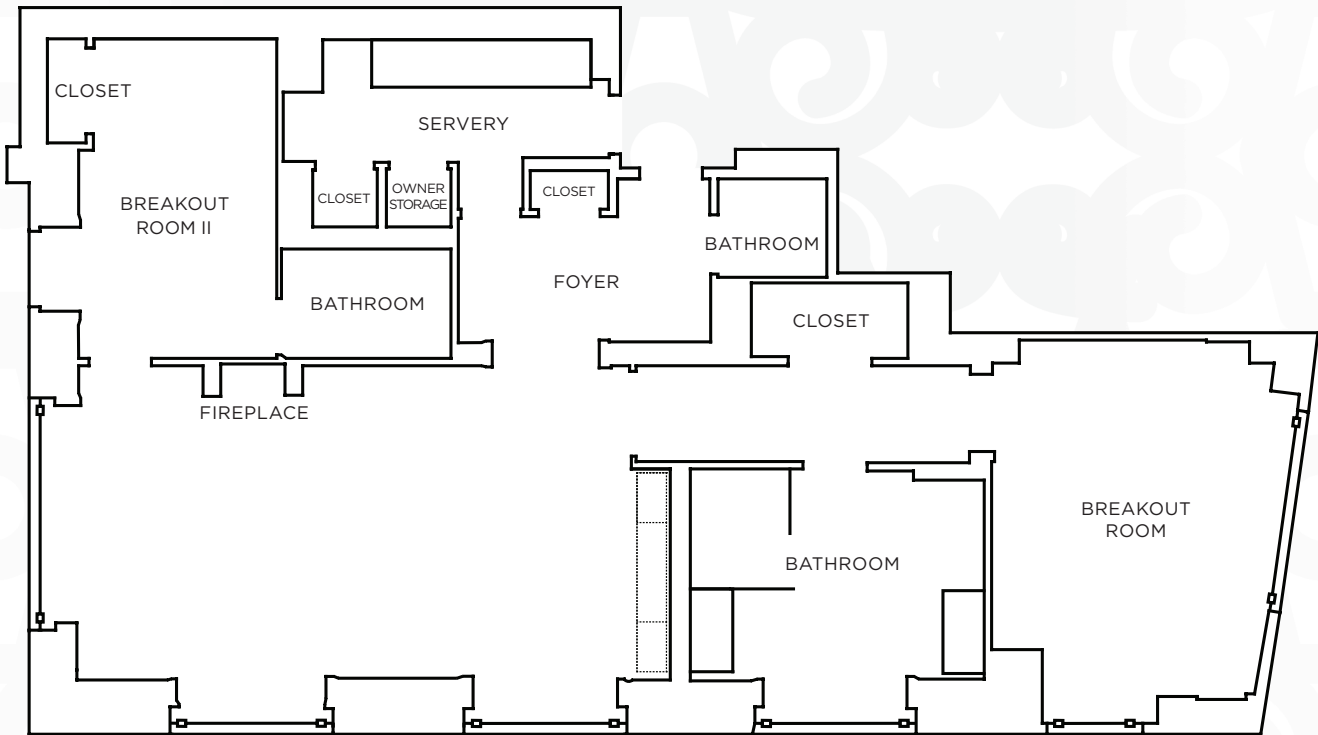


BANK STREET	DIMENSIONS (L X W)	AREA (SQ. FT.)	ROUNDS	HALF ROUNDS	CLASSROOM HORIZONTAL	HOLLOW SQUARE	BOARDROOM	RECEPTION	U-SHAPE	THEATRE
BOARDROOM	16' X 21'	336	12	12	12	12	12	-	12	12
BREAKOUT ROOM	12' X 17'	204	10	6	-	-	6	-	-	-

THE ADELAIDE HOTEL TORONTO

THE EXCHANGE FLOOR HARBOUR VIEW STREET

Dynamic luxury meeting suites soaring 30 storeys over downtown Toronto.

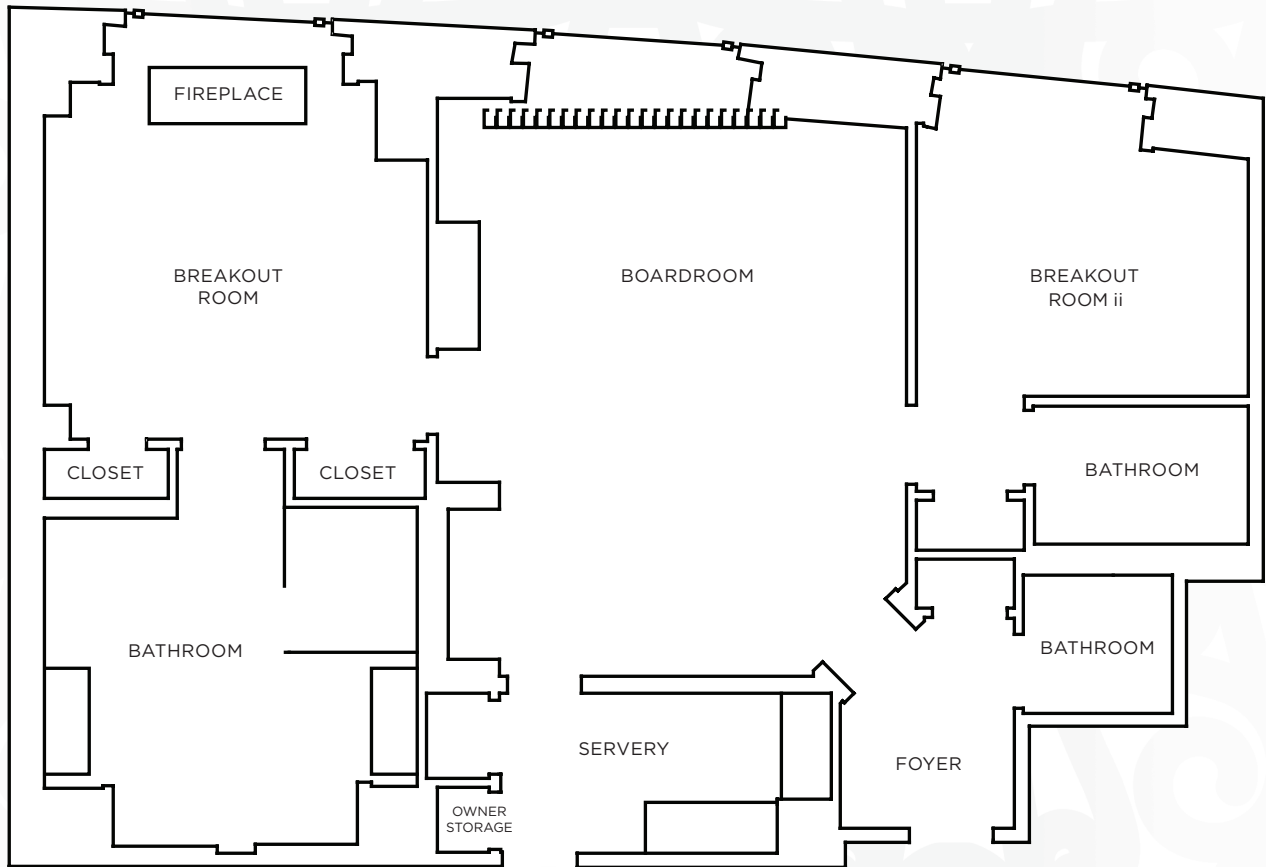


HARBOUR VIEW	DIMENSIONS (L X W)	AREA (SQ. FT.)	ROUNDS	HALF ROUNDS	CLASSROOM HORIZONTAL	HOLLOW SQUARE	BOARDROOM	RECEPTION	U-SHAPE	THEATRE
BOARDROOM	18' X 32'	576	20	18	20	20	22	-	20	24
BREAKOUT ROOM	19' X 15'	285	6	6	-	-	8	-	-	-
BREAKOUT ROOM ii	16' X 12'	192	-	-	-	-	-	-	-	-

THE ADELAIDE HOTEL TORONTO

THE EXCHANGE FLOOR NOVEMBRO STREET

Dynamic luxury meeting suites soaring 30 storeys over downtown Toronto.

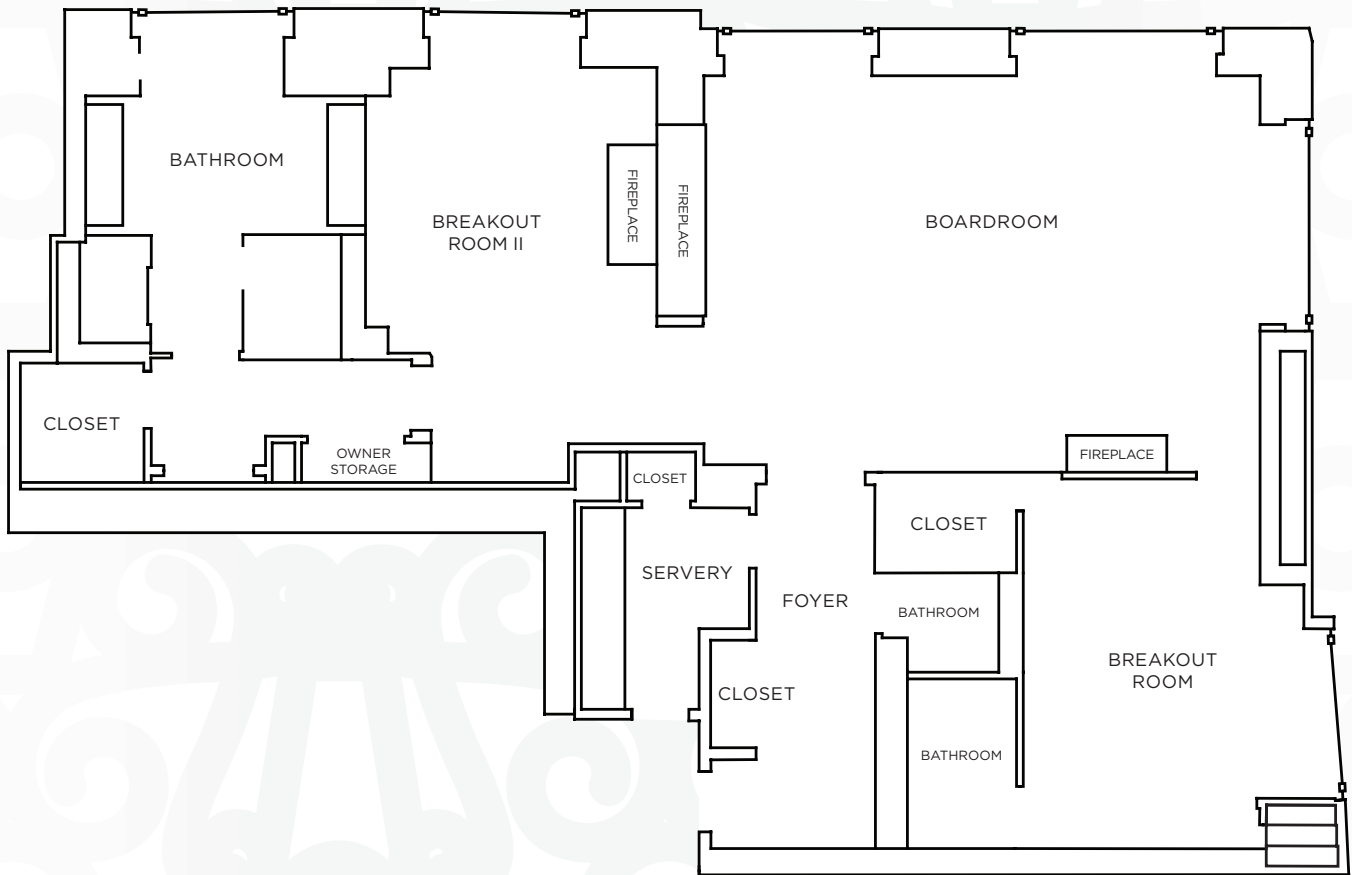


NOVEMBRO	DIMENSIONS (L X W)	AREA (SQ. FT.)	ROUNDS	HALF ROUNDS	CLASSROOM HORIZONTAL	HOLLOW SQUARE	BOARDROOM	RECEPTION	U-SHAPE	THEATRE
BOARDROOM	18' X 25'	450	20	18	18	16	16	-	14	20
BREAKOUT ROOM	15' X 16'	240	10	6	-	-	10	-	-	-
BREAKOUT ROOM II	13' X 12'	156	-	-	-	-	-	-	-	-

THE ADELAIDE HOTEL TORONTO

THE EXCHANGE FLOOR WALL STREET

Dynamic luxury meeting suites soaring 30 storeys over downtown Toronto.



WALL STREET	DIMENSIONS (L X W)	AREA (SQ. FT.)	ROUNDS	HALF ROUNDS	CLASSROOM HORIZONTAL	HOLLOW SQUARE	BOARDROOM	RECEPTION	U-SHAPE	THEATRE
BOARDROOM	20' X 30'	660	24	18	24	20	20	-	24	24
BREAKOUT ROOM	23' X 14'	322	10	6	-	-	10	-	-	-
BREAKOUT ROOM II	19' X 15'	285	10	6	-	-	8	-	-	-



Soaring 65-stories in the heart of downtown Toronto's Financial District, The Adelaide Hotel Toronto offers a remarkably central location, steps from the city's famous landmarks including the CN Tower, Rogers Centre, TIFF Bell Lightbox, Air Canada Centre, Theatre District, and Toronto Stock Exchange.

IN-ROOM FEATURES

- Most spacious guestrooms in Toronto
- Flawless furnishings, including an executive work desk
- State-of-the-art amenities, including iPod® docking station
- Complimentary High-speed WiFi access

SERVICES & AMENITIES

- Concierge
- 24-hour business centre
- 12,000 sq ft of meeting space, including the 30th Exchange Floor
- Signature evening service
- Dry cleaning
- Valet parking and limousine service

DINING

- Signature 110-seat restaurant on 31st floor
- Sky terrace overlooking Toronto cityscape
- Street-level lobby lounge
- 24-hour private dining

SPA & WELLNESS

- Full-service Spa on 31st floor
- 9 luxurious treatment rooms
- Nail bar
- Infinity saltwater lap pool & whirlpool
- State-of-the-art fitness centre
- Technogym™ equipment
- Movement Studio for yoga and pilates

LOCATION

- Pearson International Airport (YYZ) 28 km
- Billy Bishop Airport (YTZ) 7 km
- Union Station (Front Street) 500 m
- Air Canada Centre 700 m
- Rogers Centre 1.5 km
- Massey Hall 750 m



THE ADELAIDE HOTEL TORONTO

325 Bay Street Toronto, Ontario M5H 4G3
 t. +1 416 306 5800 f. +1 416 306 5801
 adelaidetoronto@stregis.com
 www.adelaidehoteltoronto.com