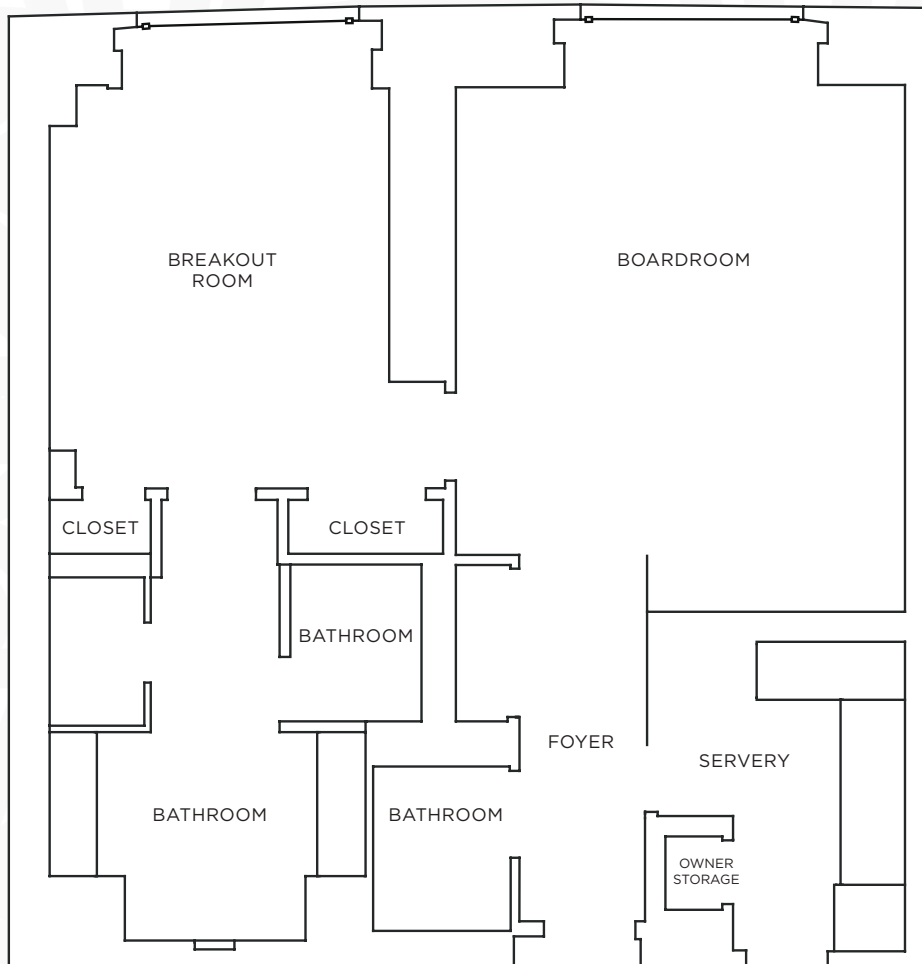


THE ADELAIDE HOTEL TORONTO

THE EXCHANGE FLOOR BANK STREET

Dynamic luxury meeting suites soaring 30 storeys over downtown Toronto.



BANK STREET	DIMENSIONS (L X W)	AREA (SQ. FT.)	ROUNDS	HALF ROUNDS	CLASSROOM HORIZONTAL	HOLLOW SQUARE	BOARDROOM	RECEPTION	U-SHAPE	THEATRE
BOARDROOM	16' X 21'	336	12	12	12	12	12	-	12	12
BREAKOUT ROOM	12' X 17'	204	10	6	-	-	6	-	-	-



Soaring 65-stories in the heart of downtown Toronto's Financial District, The Adelaide Hotel Toronto offers a remarkably central location, steps from the city's famous landmarks including the CN Tower, Rogers Centre, TIFF Bell Lightbox, Air Canada Centre, Theatre District, and Toronto Stock Exchange.

IN-ROOM FEATURES

- Most spacious guestrooms in Toronto
- Flawless furnishings, including an executive work desk
- State-of-the-art amenities, including iPod® docking station
- Complimentary High-speed WiFi access

SERVICES & AMENITIES

- Concierge
- 24-hour business centre
- 12,000 sq ft of meeting space, including the 30th Exchange Floor
- Signature evening service
- Dry cleaning
- Valet parking and limousine service

DINING

- Signature 110-seat restaurant on 31st floor
- Sky terrace overlooking Toronto cityscape
- Street-level lobby lounge
- 24-hour private dining

SPA & WELLNESS

- Full-service Spa on 31st floor
- 9 luxurious treatment rooms
- Nail bar
- Infinity saltwater lap pool & whirlpool
- State-of-the-art fitness centre
- Technogym™ equipment
- Movement Studio for yoga and pilates

LOCATION

- Pearson International Airport (YYZ) 28 km
- Billy Bishop Airport (YTZ) 7 km
- Union Station (Front Street) 500 m
- Air Canada Centre 700 m
- Rogers Centre 1.5 km
- Massey Hall 750 m



THE ADELAIDE HOTEL TORONTO

325 Bay Street Toronto, Ontario M5H 4G3
 t. +1 416 306 5800 f. +1 416 306 5801
 adelaidetoronto@stregis.com
 www.adelaidehoteltoronto.com